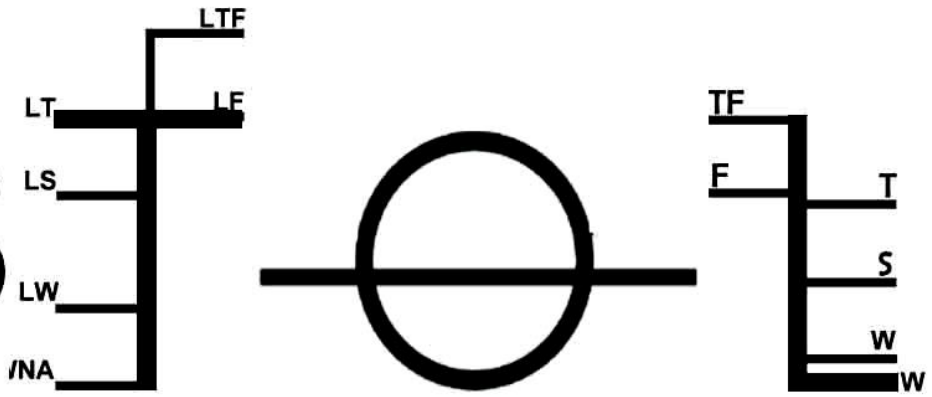


BRIS 



TIDES ?

2015 EUROPEAN GREEN CAPITAL  
LOVES TIDES

my future  
my choice

# Proxi and Peri Bench Mark Scores

Theme	Proxi and Peri Benchmark Score out of 10	How can we raise the score?
Heritage	9	?
Water	4	?
<b>Biodiversity</b>	<b>6</b>	<b>?</b>
Energy	9	?
Hydropoetics	5	?
Future	7.5	?



Can seeds survive for more than 100 years?

YES

NO

# YES!

## Seeds can grow after hundreds of years laying dormant!

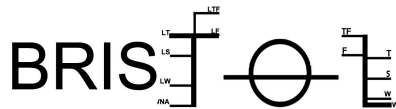
From 1680 until the early 1900's trade boats from all over the world would off load their ballast (earth, stones and gravel used to weigh down the craft as it docked) into the river at Bristol.

**The ballast contained the seeds of plants from wherever the ship had sailed.**

These ballast seeds can be dormant for hundreds of years, but by excavating the river bed, it is possible to germinate and grow these seeds into flourishing plants.

The Arnolfini and their partners have used a disused concrete barge and created a permanent [Ballast Seed Garden](#) on Bristol's Floating Harbour, filled with a variety of non-native plants, creating a living history of the city's past and reflecting the different routes travelled by Bristol merchants worldwide.

Find the location of the ballast garden.  
Put a heart on your map to show that  
Bristol Loves Tides ...(and biodiversity!)



TIDES ?



Have swans lived in the harbour for more than  
100 years?

YES

NO

# YES!

## Swans have been in Bristol's docks for at least 300 years!

- They're here all year, but numbers go up in winter, when birds fly in to benefit from warmer waters and a guaranteed source of food.
- Swans fly away to breed, because of a lack of suitable nest sites in the docks.
- You can tell males from females by their bill – they're brighter orange and have a larger black lump on top.
- Swans sometimes crash land on Bristol Bridge, causing traffic chaos!

Spotted a swan in the harbour? ❤️

Stick a heart on the map to mark the spot.





# Which of these birds can you spot in the harbour?



Gull

Pigeon



Sparrow



Starling



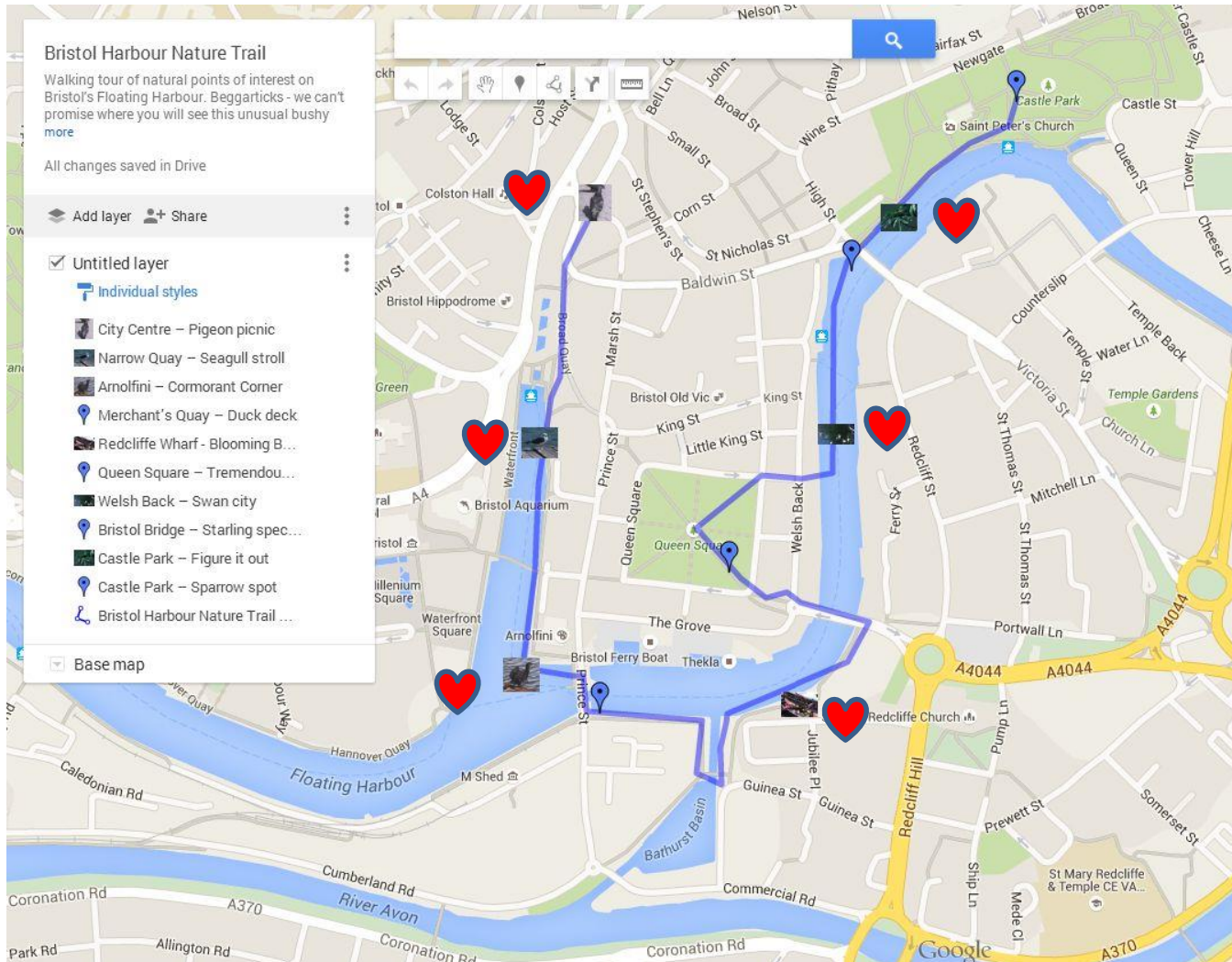
Cormorant



Swan



All of them! Look at the map to see the best place to spot.



Click on this [link](#) to interact and find out more.



## But ... it's not all good news

- There are campaigns happening in Bristol which are supporting the wildlife and trying to increase biodiversity.
- 'Avon Wildlife Group' are trying to improve habitats for wild animals. Here's the [link](#) to tell you about how you could get involved.
- 'City to Sea' are looking at how to minimise plastic waste which are polluting the sea and killing wildlife.

# What can you do?

The World Wildlife Fund has ideas on how you can change the way you live.

Look at their suggestions for:

- [Saving energy](#)
- [Thinking about what you buy](#)


# Fish Bone Diagram

**Younger people**                      **People Your age**                      **People in Charge of things**

**Older people**

*Eg: Dont recycle plastic*

Add things you think are causing a low score to the bones of the fish

  
The effect of all this is low scores for not Loving Tides for the theme  
.....

Add more bones if you need to

*Eg: No trees in school*

**Green Spaces**

**At Home**

**Buildings**

**Places further away from school**

**Places in or near school**



# Feed back

- Swap your team's fishbone diagram with another team -
- Read their ideas
- Add ideas if you have some
- Swap again
- Do this 5 times until the ideas have been seen by everyone

